

# CHANNEL 4-H NEWS

December 2013

**Inside this issue:**

<i>Club Corner</i>	2
<i>Small Animal News</i>	2
<i>Teen Superintendents</i>	3
<i>4-H Article</i>	4
<i>4-H Workshops</i>	5
<i>Officer Roles &amp; Parli Pro Training</i>	6
<i>State Rabbit &amp; Cavy Show</i>	7
<i>Michigan 4-H Day</i>	8
<i>4-H Animal Evaluation Project</i>	9-10
<i>Calendar</i>	11

## Beef Weigh-In

**\*\*DATE CHANGE** - Saturday, December 14  
9:30 a.m. - 11:00 a.m.  
Isabella County Fairgrounds



All beef project members must bring their market beef animals to the fairgrounds to be weighed and tagged. Each member may weigh-in 2 animals.

## Officer Roles & Parliamentary Procedure Training

December 7  
10 am - 12 noon  
Isabella County Building, Room 320

This is a great training opportunity for members, leaders and clubs! This training is open to all club members, not just the officers of the club. 4-H Leaders and parents are welcome to register also.

After the training we will serve a pizza lunch. The training and lunch are free to all who register. Please RSVP by December 4<sup>th</sup>.

## 4-H Day at the Breslin Center

Sunday, February 2, 2014  
1:30 p.m.  
FREE to 4-H members, volunteers, and their families  
MSU Breslin Center, East Lansing



You ALL are invited to attend the ninth annual celebration of MSU Extension 4-H Youth Development at the Spartan Women's basketball game as they take on the Purdue Boilermakers!

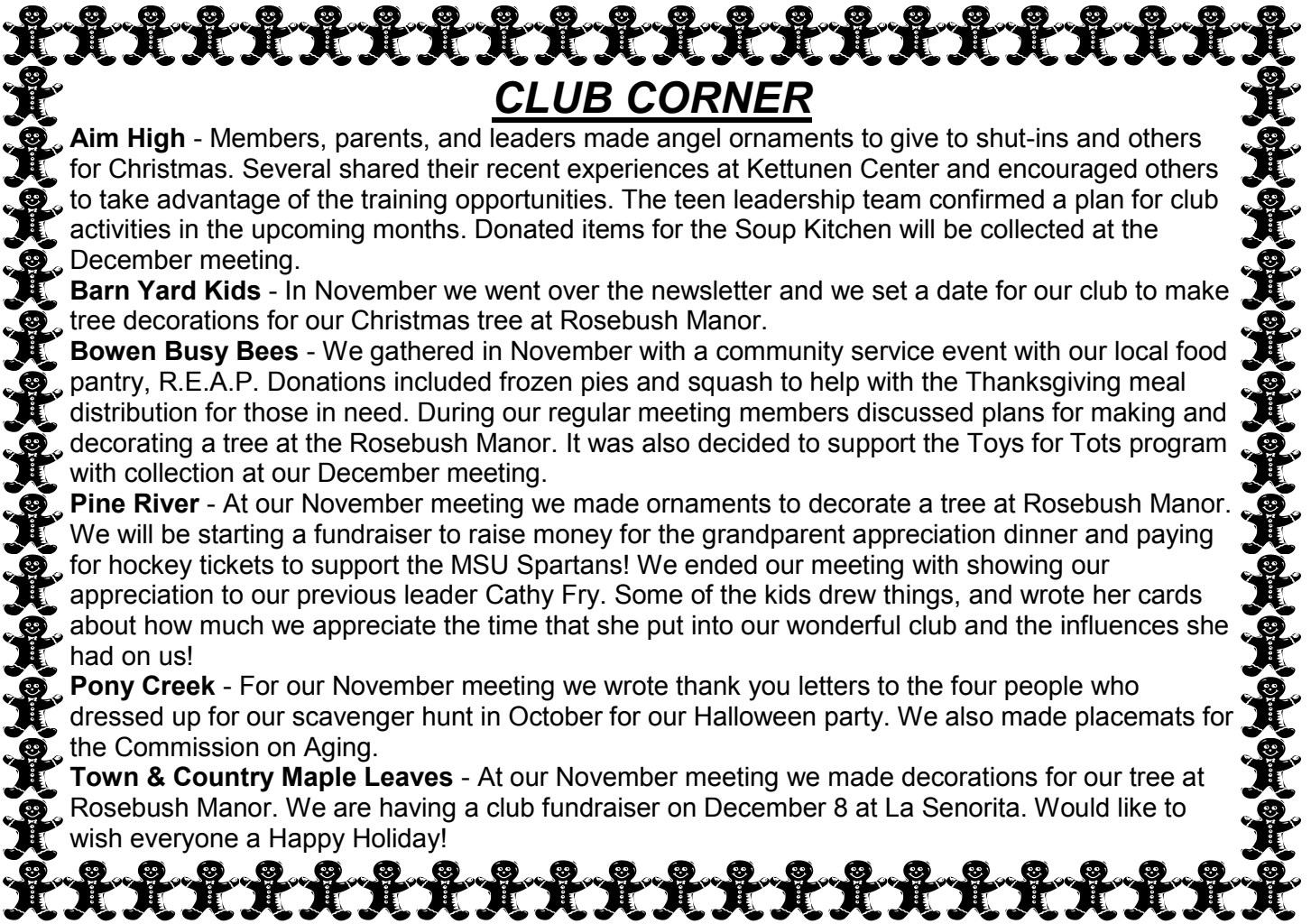
Call the Extension office now to reserve your FREE tickets!



Protected Under  
18 U.S.C. 707



**WISHING EVERYONE A VERY  
HAPPY & SAFE HOLIDAY SEASON!!!**



## CLUB CORNER

**Aim High** - Members, parents, and leaders made angel ornaments to give to shut-ins and others for Christmas. Several shared their recent experiences at Kettunen Center and encouraged others to take advantage of the training opportunities. The teen leadership team confirmed a plan for club activities in the upcoming months. Donated items for the Soup Kitchen will be collected at the December meeting.

**Barn Yard Kids** - In November we went over the newsletter and we set a date for our club to make tree decorations for our Christmas tree at Rosebush Manor.

**Bowen Busy Bees** - We gathered in November with a community service event with our local food pantry, R.E.A.P. Donations included frozen pies and squash to help with the Thanksgiving meal distribution for those in need. During our regular meeting members discussed plans for making and decorating a tree at the Rosebush Manor. It was also decided to support the Toys for Tots program with collection at our December meeting.

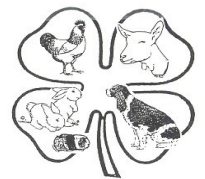
**Pine River** - At our November meeting we made ornaments to decorate a tree at Rosebush Manor. We will be starting a fundraiser to raise money for the grandparent appreciation dinner and paying for hockey tickets to support the MSU Spartans! We ended our meeting with showing our appreciation to our previous leader Cathy Fry. Some of the kids drew things, and wrote her cards about how much we appreciate the time that she put into our wonderful club and the influences she had on us!

**Pony Creek** - For our November meeting we wrote thank you letters to the four people who dressed up for our scavenger hunt in October for our Halloween party. We also made placemats for the Commission on Aging.

**Town & Country Maple Leaves** - At our November meeting we made decorations for our tree at Rosebush Manor. We are having a club fundraiser on December 8 at La Seniorita. Would like to wish everyone a Happy Holiday!

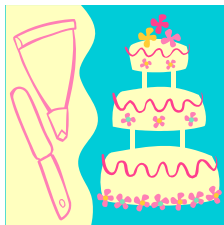
## Small Animal News

- If you sold a rabbit/poultry/goat at fair time and did not attend the Small Animal Banquet in October, then you can pick up your check at the Extension Office.
- There will not be December Small Animal Association meeting. Our next meeting will be on Thursday, January 16 at 7:00 p.m. and we encourage all small animal superintendents to attend to work on updates for the fair book.



## Cake Decorating Supplies

Are you interested in cake decorating? The Extension office has several items/supplies that were donated and are free to 4-H'ers and leaders! Please stop by the office to see what we have available for your project.



## Isabella County 4-H Rabbit & Cavy Show

The Isabella County Small Animal Association will be changing the date of its annual 4-H Rabbit & Cavy Show. The event will no longer be held on the last Saturday in February. We will share the new date with you soon.

## Animal Science 2013 - 2014 Calendar of Events

DATE	EVENT	LOCATION
December 5-8	<a href="#">MJLS Winter Classic Beef Show</a>	MSU Pavilion
January 3-5	<a href="#">MI Sheep Breeders Convention</a>	Lansing
January 24-25	Green & White Youth Event & Open Hog Show	MSU Pavilion
January 25	<a href="#">State 4-H Rabbit &amp; Cavy Show</a>	MSU Pavilion
January 31-Feb 1	4-H Judging Workshop & Mini Contest	MSU Pavilion
February 14-16	MSU Spartan Stampede Rodeo	MSU Pavilion
February 21-22	4-H Veterinary Science Leaders Workshop	Kettunen Center
February 22-23	4-H Beef, Sheep, & Swine Leaders Workshop	Kettunen Center
March 1	Spring Galaxy 4-H Horse Program Committee	MSU, Anthony Hall
March 1-9	Ag & Natural Resources Week	MSU
March 7-9	MI Horse Expo	MSU Pavilion
March 23	4-H Hairy Horse Benefit Show	MSU Pavilion
April 4-6	Michigan Beef Expo	MSU Pavilion
April 5	<a href="#">Vet-A-Visit</a>	MSU
April 11	State 4-H Horse Communications Contest	MSU, Anthony Hall
April 12	4-H Horse Spotlight on Speed Clinic Show	MSU Pavilion
April 12	Small Animals Day	MSU Pavilion
April 13	Block & Bridle Club Livestock Judging Contest	MSU Pavilion
April 26	State 4-H Goat Expo	MSU, Anthony Hall

For a complete schedule of events, visit: [http://www.ans.msu.edu/youth\\_extension\\_programs/youth\\_events](http://www.ans.msu.edu/youth_extension_programs/youth_events)

## Attention Teens! Are You Interested in Serving as a Teen Superintendent?

Applications are being accepted for teen superintendents. You may pick up applications at the Extension office or visit our new website: [http://msue.anr.msu.edu/county/isabella/isabella\\_county\\_4\\_h](http://msue.anr.msu.edu/county/isabella/isabella_county_4_h)

Prospective Teen Superintendents will be interviewed by the Superintendent of the project area they are interested in being a Teen Superintendent in. Teen superintendents must have taken the project they are interested in for at least 2 years. Applicants must be enrolled in the Teen Leadership Project (Teen Leader App: [http://msue.anr.msu.edu/county/isabella/isabella\\_county\\_4\\_h](http://msue.anr.msu.edu/county/isabella/isabella_county_4_h)) and be a teen leader in the project that they would like to be a teen superintendent in.

Responsibilities may include assisting with instructional demonstrations, workshops, or clinics; assist in preparation and set up before fair and tear down after fair; and attend pre and post fair meeting.

Applications need to be completed and returned to the Extension office by Monday, January 6, 2014.

## Winter Beef Classic

December 5 - 9, 2013  
MSU Pavilion, East Lansing

This annual junior beef show is hosted by the Michigan Junior Livestock Society (MJLS) - the entry information is available on their website. <http://mijrlivestocksociety.com/>

## 4-H Promotional Items Available

Contact the MSU Extension Office if your club participates in a promotional event (like a parade or booth at a show or event).

4-H Council approved the purchase of promotional materials for clubs and the royalty court to use when promoting and representing 4-H. We will have items available for you. Let us know of your plans ahead of time to ensure that we have supplies on hand for you.

# 4-H Project Snapshot's: Resources you can use!

## 4-H Project Snapshot's can help volunteers and club members recruit new members.

Posted on **November 22, 2013** by **Katie VanderKolk**, Michigan State University Extension

Sometimes it is a hard task to explain what a 4-H project is all about to others who ask. How do members and leaders quickly, and concisely, articulate all of the learning, relationship building, civic awareness, science, life skill development and the plethora of other things that 4-H programs provide to youth? Needless to say it can be hard.

[Michigan State University Extension](#) is making it a bit easier for 4-H volunteers and members to communicate what they do. 4-H Project Snapshot Sheets have been in development for the past two years. Currently there are 12 published snapshots that can be downloaded from the [Michigan 4-H website](#) on the following project areas:

[Michigan 4-H Dog Project Snapshot](#)

[Michigan 4-H Goat Project Snapshot](#)

[Michigan 4-H Poultry Project Snapshot](#)

[Michigan 4-H Rabbit Project Snapshot](#)

[Michigan 4-H Horse and Pony Project Snapshot](#)

[Michigan 4-H Dairy Cattle Project Snapshot](#)

[Michigan 4-H Horticulture Project Snapshot](#)

[Michigan 4-H Photography Project Snapshot](#)

[Michigan 4-H Swine Project Snapshot](#)

[Michigan 4-H Sheep Project Snapshot](#)

[Michigan 4-H Animal Evaluation Project Snapshot](#)

[Michigan 4-H Beef Project Snapshot](#)

Each of these snapshot sheets explain what the project is, what youth will learn in a progressive way, highlights science, life skill development, citizenship and leadership, and communication skills youth will learn through the project, explore ways youth can get more involved in the topic area, and list curriculums and resources in the content area. That is a lot of information in one sheet!

Currently, the 4-H Snapshot Sheets have had over 5,000 "clicks" on the [Michigan 4-H website](#) in the past year. Volunteers are encouraged to give them out to perspective club members and can also use them to learn about resources that they may not be using. Additionally, local [MSU Extension](#) offices are using them as a recruitment tool.

Telling the story of what 4-H projects are all about has never been easier. These useful resources are a great tool to use to spread the word about the amazing opportunities [Michigan 4-H](#) has to offer!

# 4-H WORKSHOPS

Registration fee for the below workshops is paid by the Isabella County 4-H Program Council for all enrolled teen (ages 13 and up) and adult 4-H volunteers. To register contact the MSU Extension office at 772-0911 ext. 302.

## 4-H Horse Judges and Show Managers Conference

**January 18 - 19, 2014 - Kettunen Center**

This conference provides continuing education opportunities for current Michigan 4-H Horse Regular & Conditional judges, Extension staff, 4-H Horse Judges Advisory Committee members, State 4-H Horse Show committee members; horse superintendents/representatives from all Michigan counties and open horse show managers. Participation can improve cooperation between show managers and judges, increase the quality of horse show management techniques, and allow the learning of creative and innovative methods for making horse shows more educational for youth. The conference provides judges with updates in riding styles, class scoring, breed differences in events, and techniques to be better communicators with management and youth exhibitors.

**Adults (non 4-H eligible) only.** [For more information, download the Program Announcement.](#)

## 4-H Teen Leadership & Community Change Conference

**January 25 - 26, 2014 - Kettunen Center**

This powerful 2014 conference brings teens, age 12 and up, from across the state to learn youth leadership and civic engagement skills. Adult volunteers are welcome, too. Following are quotes from the past conference participants: "I can be a greater (teen) leader and organize events to help my community." "I learned how my community service can help prepare me for my future." "Leadership can be easy and fun." "4-H gets to travel around the world to help people who have little." "The discussions about service learning and helping my community will help me." "I will be a more effective leader in my county groups." A complete listing of all sessions offered will be on the [4-H website](#) soon.

## 4-H Winterfest

**February 1 - 2, 2014 - Kettunen Center**

4-H Winterfest is a hands-on educational program that is open to youth ages 8 to 12 years old. Youth will spend 2 days learning about many different project areas while meeting youth from around the state. Winterfest offers participants an opportunity to experience Kettunen Center in an overnight camp setting. Youth will participate in hands-on sessions that range from crafts to shooting sports. Winterfest is also an opportunity to spend time outdoors enjoying all that Michigan winters have to offer! Youth will also have the opportunity to go sledding/tubing, snow shoeing, and cross-country skiing.

## 4-H Veterinary Science Teen and Adult Leaders Workshop

**February 21 - 22, 2014 - Kettunen Center**

Explore animal systems and learn about animal health for a broad array of animal species. Come prepared to learn from others, share information and experiences, ask questions and quiz veterinarians about their careers. You will also participate in hands-on demonstrations that will teach you how to help members recognize healthy, sick, or injured animals. Meet other youth that have developed outstanding veterinary science projects and gain ideas to help others start their own vet science projects. Open to adult and teen volunteers ages 13 (as of January 1, 2014) and older.

## 4-H Beef, Sheep & Swine Teen and Adult Leaders Workshop

**February 22-23, 2014 - Kettunen Center**

This workshop is designed for both teen and adult leaders who are involved with beef cattle, sheep and swine projects. Topics include animal health, management, care and nutrition. In addition, breakout sessions will include livestock and meat evaluation, state awards, and more. Interaction with leaders from different counties is encouraged for exchanging of ideas and programs, and meeting other volunteers in the same interest areas. The workshop will also offer ways to enhance communication and teaching skills, and learn about the many opportunities available for those interested in the beef, sheep and swine industries. Open to adult and teen volunteers ages 13 (as of January 1, 2014) and older.



# Officer Roles & Parliamentary Procedure Training

**MICHIGAN STATE**  
**UNIVERSITY**

Extension



**Date:** December 7, 2013  
**Time:** 10 a.m to 12 noon  
**Cost:** FREE; pizza @ noon  
**Location:**  
Isabella County MSUE  
Room 320  
200 N. Main, Mt. Pleasant  
**RSVP:** 989-772-0911 x. 302

- **Officer Roles**
  - President
  - Vice President
  - Secretary
  - Treasurer
  - Reporter & more
- **Parliamentary Procedure for the entire club not just officers.**
- **Presented by Leadership and Civic Engagement Workgroup**



Michigan State University is an affirmative-action, equal opportunity employer. Michigan State University Extension programs and materials are open to all without regard to race, color, national origin, gender, gender identity, religion, age, height, weight, disability, political beliefs, sexual orientation, marital status, family status or veteran status.

# STATE 4-H RABBIT & CAVY SHOW

## Classes:

Rabbit and Cavy breed classes ONLY. Judging by ARBA Standards (breed, fur, meat). No showmanship classes offered.

## Other events during the show:

- » Breed ID
- » Educational Posters and Displays
- » Club Informational Booths
- » Supply Vendors
- » Scholarship Auction
- » Gold Clover Rabbit and Cavy Showmanship Award Contests

## Cost:

\$3.00 per class

## Who can participate:

Open to all Michigan 4-H members 9-19 years of age (as of January 1, 2014). A non-competitive Cloverbud division for 5-8 years of age is also available.

Want to become a 4-H member? Contact your county MSU Extension Office today!

## Find out more...

For more information and event catalog, contact your local MSU Extension office or visit the website at: [4h.msue.msu.edu/4h/rabbits\\_cavies](http://4h.msue.msu.edu/4h/rabbits_cavies)

**MICHIGAN STATE**  
UNIVERSITY | **Extension**



**January 25, 2014**

**MSU Pavilion,  
East Lansing, MI**

**On-site registration  
begins at 6:30 a.m.**

The Michigan 4-H Rabbit and Cavy Show is sponsored by Michigan 4-H Youth Development Programs, Michigan State University Extension.

MSU is an affirmative-action, equal-opportunity employer. Michigan State University Extension programs and materials are open to all without regard to race, color, national origin, gender, gender identity, religion, age, height, weight, disability, political beliefs, sexual orientation, marital status, family status or veteran status.





# Celebrating MSU Extension's 4-H Youth Michigan 4-H Day

at the

## Breslin Center

### February 2, 2014

## Lady Spartan's vs. Purdue Boilermakers

**JOIN** | THE REVOLUTION  
OF RESPONSIBILITY

**When:** February 2, 2014. **Gate D** will open for 4-H and MSU Extension guests at **noon**. Game time is scheduled for **1:30 p.m.**

**Why:** To celebrate Michigan 4-H youth, 4-H volunteers and 4-H programs. This year's theme is once again, the popular "Revolution of Responsibility."

**Who:** 4-H youth and their families, 4-H volunteers and MSU Extension staff, members and their families.

**Cost:** **FREE** tickets available for all of the above. Tickets are available through your county MSU Extension office.

**Transportation & parking:** Transportation may be coordinated through your county Extension office. Contact for details. Parking is free for school buses, all other buses are \$20. Cars \$5.

**Attire:** Show your MSU Extension/4-H pride by wearing your green and white 4-H or MSU Extension apparel.

#### Extras:

- Hear fellow 4-H'ers lead the 4-H pledge.
- To be televised nationwide.
- Get your picture taken with Sparty.

#### Get in the game!

Let your 4-H leader know you (and how many of your family members) want to attend, or contact your county Extension office.

#### For more information:

[http://msue.anr.msu.edu/events/4\\_h\\_day\\_at\\_breslin\\_lady\\_spartans\\_vs\\_purdue](http://msue.anr.msu.edu/events/4_h_day_at_breslin_lady_spartans_vs_purdue)

Contact your county MSU Extension office or  
Email Gail Hebert at [hebertg@anr.msu.edu](mailto:hebertg@anr.msu.edu)

**MICHIGAN STATE**  
UNIVERSITY | **Extension**



## 4-H Animal Evaluation Project



### WHAT'S IT ALL ABOUT?

The 4-H animal evaluation project areas allow you the opportunity to learn about animal selection, evaluation, breed character, production factors, marketing and careers in the livestock industry.

- » Learn principles of animal science and gain life skills, such as decision-making, by evaluating and communicating differences on one or more head of livestock.
- » Gain knowledge of animal differences and be able to evaluate and select animals based on a desired set of characteristics.
- » Increase public speaking skills by learning to prepare a logical, coherent set of notes that allow you to present an effective set of oral reasons.

### THE BIG PICTURE

#### Starting Out:

- » Learn about the ideal beef, sheep and swine animal.
- » Accurately describe an animal and compare the animal to others.
- » Locate and name specific parts of beef, sheep and swine.
- » Practice judging classes at the local level.
- » Identify different beef, sheep and swine breeds.
- » Learn terminology associated with beef, sheep and swine.
- » Answer questions based on the four animals being evaluated in the class.
- » Learn how to organize notes on animals.
- » Participate in a judging contest.
- » Go to a county fair and watch livestock shows. Judge each class from the stands and see how closely your placings match those of the official judge.

#### Learning More:

- » Prepare and give reasons defending a class placing.
- » Recognize significant differences in muscle, fat and structure between animals.
- » Differentiate terms used for breeding and market animals.
- » Explore additional terminology to compare rather than describe an animal.
- » Increase accuracy of questions asked about a class through taking more descriptive notes.
- » Explore the difference between yield grade and quality grade.
- » Interpret individual performance data and Expected Progeny Differences (EPDs) for selected animals.
- » Analyze and make decisions based on which four animals would be kept in a keep/cull class of eight animals.

#### Expanding Horizons:

- » Help younger 4-H members explore an animal evaluation project.
- » Present articulate, structured oral reasons.
- » Organize a livestock judging clinic for surrounding counties.
- » Evaluate livestock carcasses.
- » Serve as a county fair sweepstakes judge.
- » Plan a local judging contest.
- » Organize a fundraising event to be able to travel to additional livestock judging events.
- » Serve as an official judge or as an apprentice judge.
- » Use performance records to select ewes, gilts and heifers.
- » Interview livestock producers about current livestock trends.



### CURRICULA & RESOURCES

#### Michigan 4-H Curricula

- <http://4h.msue.msu.edu/4h/livestock>  
 » Michigan 4-H Judging Cards (4-H1293-96)

#### Curricula – Other States

- » Beef, Sheep and Swine Selection and Evaluation (4-H 103R) (The Ohio State University Extension)  
<http://estore.osu-extension.org/productdetails.cfm?PC=2277>
- » From the Ground Up: The Basics of Livestock Judging (Iowa State University)  
<http://www.ans.iastate.edu/clubs/judging/livestock/Basicsppt.pdf>
- » Livestock Judging Guide for 4-H Club Members (4-H S92) (Kansas State University Extension) <http://www.ksre.ksu.edu/bookstore/pubs/S92.pdf>

#### National 4-H Curricula

- <http://www.4-h.org/resource-library/curriculum/>
- » Beef
    - Here's the Beef – Beef 2 (08144)
  - » Sheep
    - Leading the Flock – Sheep 3 (06369)
  - » Swine
    - The Incredible Pig – Swine 1 (08065)
    - Putting the Oink in Pig – Swine 2 (08066)
    - Going Whole Hog – Swine 3 (08067)



## 4-H Animal Evaluation Project



### FOCUS ON ANIMAL EVALUATION

#### Science

- » Critically evaluate animals based on structure, muscle, fat, soundness, balance and volume.
- » Learn about beef, sheep and swine anatomy and physiology.
- » Use data scenarios to select animals based on the given situation.
- » Understand differences in EPDs to predict future offspring success.

#### Life Skills

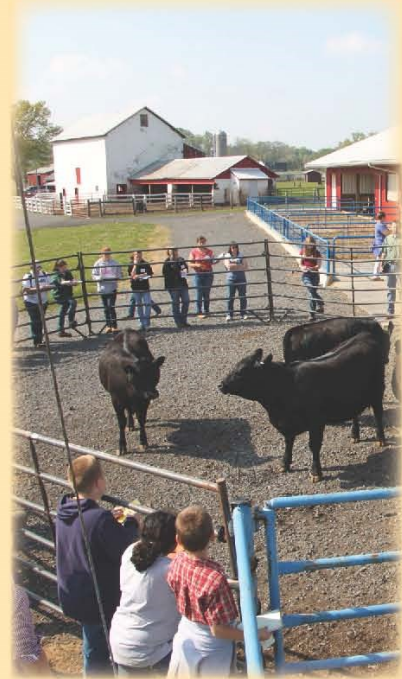
- » Use critical-thinking, problem-solving and decision-making skills to make good decisions about animal selection.
- » Recall information and descriptions of animals to use later in a set of reasons.
- » Increase public speaking ability through oral reasons.
- » Practice personal resiliency through successes and challenges in animal evaluation.

#### Citizenship & Leadership

- » Volunteer to do animal selection presentation during a county 4-H meeting.
- » Provide animals for other 4-H members to judge to help reinforce livestock evaluation skills.
- » Lead other 4-H members in participating in local livestock judging events.
- » Arrange a practice for 4-H members by traveling to different farms in the area.

#### Communication

- » Participate in a judging contest giving oral reasons to an adult.
- » Read through terminology to enhance vocabulary used in describing livestock.
- » Instruct 4-H members on how to defend their placings of a class of stuffed animals.



### HOW CAN YOU GET INVOLVED?

- » Contact your local Michigan State University (MSU) Extension office for workshops, activities and events.
- » Attend a show and listen to a judge give oral reasons, and witness the differences they discuss.
- » Participate in the livestock judging contest at the county fair or fairs in the area.
- » Work with a local 4-H volunteer or FFA advisor to start a county livestock judging program.
- » Visit with local producers and evaluate livestock in the area.
- » Visit a local meat locker or local grocery meat case to observe carcasses.
- » Participate in the MSU Block and Bridle Livestock Judging Contest in April at the MSU Pavilion for Agriculture and Livestock Education.
- » Participate in the State 4-H/FFA Livestock Judging Contest in July at the MSU Pavilion for Agriculture and Livestock Education.
- » If you are interested in a college education in animal science or veterinary medicine, visit MSU's website at [www.msu.edu](http://www.msu.edu) to explore those majors.
- » Attend regional livestock judging practices offered in the fall by MSU Extension.
- » Exhibit or attend local, regional or national shows and conferences to learn more about judging.
- » If you are interested in livestock judging at MSU, contact the MSU Department of Animal Science, <http://www.ans.msu.edu> to explore course offerings and opportunities.

The 4-H snapshots are adapted with permission from the Iowa 4-H Project Hot Sheets by Iowa State University Extension, 2011. Retrieved from <http://www.extension.iastate.edu/4h/page/4-h-project-hot-sheets>.

MSU is an affirmative-action, equal-opportunity employer. Michigan State University Extension programs and materials are open to all without regard to race, color, national origin, gender, gender identity, religion, age, height, weight, disability, political beliefs, sexual orientation, marital status, family status or veteran status. Issued in furtherance of MSU Extension work, acts of May 8 and June 30, 1914, in cooperation with the U.S. Department of Agriculture. Thomas G. Coon, Director, MSU Extension, East Lansing, MI 48824. This information is for educational purposes only. Reference to commercial products or trade names does not imply endorsement by MSU Extension or bias against those not mentioned. The name "4-H" and the emblem consisting of a four-leaf clover with stem and the "H" on each leaflet are protected under Title 18 U.S.C. 707. (4H1618 1P-WEB-3:2013-LP) Produced by ANR Communications.

Michigan State University Extension  
 Isabella County  
 200 N. Main Street  
 Mt. Pleasant, MI 48858

Phone: (989) 772-0911 ext. 302  
 Fax: (989) 773-1622

Website:

<http://www.isabellacounty.org/dept/msu>

Check out our new website:

<http://msue.anr.msu.edu/county/info/isabella>



[Facebook](#)

## **SAVE THE DATES**

Beef Weigh-In - December 14

State Rabbit & Cavy Show - January 25, 2014

Winterfest 2014 - February 1-2, 2014

4-H Day at the Breslin - February 2, 2014

4-H Exploration Days - June 18 - 20, 2014

Camp Counselor Training – July 7, 2014

4-H Summer Camp (overnight) - July 8 & 9, 2014

4-H Cloverbud Day Camp - July 14 & 15, 2014

Fair Entry Day - July 19, 2014

2014 Fair – July 20- 26, 2014

### **Isabella County 4-H Calendar**

December		
3	Teen Horse Leaders @ MSUE	6 pm
3	Horse Leaders @ MSUE	7 pm
7	Officer Roles & Parliamentary Procedure Training @ MSUE	10 am - 12 noon
11	Shooting Sports Committee @ MSUE	6:30 pm
14	Beef Weigh-In @ Fairgrounds	9:30 am - 11 am
24 & 25	OFFICE CLOSED	
31 & Jan 1	OFFICE CLOSED	

*MSU is an affirmative-action, equal-opportunity employer. Michigan State University Extension programs and materials are open to all without regard to race, color, national origin, gender, gender identity, religion, age, height, weight, disability, political beliefs, sexual orientation, marital status, family status or veteran status. Issued in furtherance of MSU Extension work, acts of May 8 and June 30, 1914, in cooperation with the U.S. Department of Agriculture. Thomas G. Coon, Director, MSU Extension, East Lansing, MI 48824. This information is for educational purposes only. Reference to commercial products or trade names does not imply endorsement by MSU Extension or bias against those not mentioned.*

*“Accommodations for persons with disabilities may be requested by contacting the MSU Extension office at (989) 772-0911 ext. 302. at least 5 days prior to the scheduled event to ensure sufficient time to make arrangements. Requests received after this time will be met when possible.”*

Monica Borgman, 4-H Program Coordinator  
 borgman5@anr.msu.edu

Nonie Gross, Secretary I  
 grossn@anr.msu.edu

Paul Gross, Extension Educator  
 Sabrina McGee, SNAP-ED PI  
 Belinda Laughlin, Master Gardener Coordinator