

*Gladwin County*

4-H Family News

November 2014

Welcome To The New Newsletter!

Dear 4-H Families,

We would like to thank all of our members, parents, and volunteers who helped out at the Fall Awards Banquet this year! Congratulations to all 4-H members on their awards received. We recognized the youth and adults who have made this past year a wonderful experience. Many volunteers give of their time and talents to be positive role models for the 4-H Youth in Gladwin County. A special "Thank You" goes out to Norma Maxwell for being a devoted leader for "55" Years of managing successfully in the 4-H Youth Program. The many years of her dedicated service has been appreciated by the Gladwin County 4-H. A step-up Thank You goes out to Jeff Willford for offering his service to provide a sound system at this event, it was definitely appreciated.

This year, Michigan is making a change to a new enrollment system called "4-H online"; so the deadline for county enrollment has been moved back to January 2015. As our organization continues to program, please keep track of new members by making notes of who is in your club and how many club meetings and/or association meetings they have attended. As soon as we receive new information, we will provide enrollment forms, a code of conduct form, and a media/medical release form to leaders. Then as leaders start collecting forms and payments, they'll need to be returned to the MSU Extension Office.

With this new 4-H Online system, parents of members and/or leaders can sign up directly from their own computer. After you sign-up, an email is generated and sent to Extension staff to verify the information entered. It is then accepted or denied. Payments can be made at the time of enrollment by debit/credit card. However, you will still have the option to write a check made payable to MSU and turned into your 4-H leader just as it has been done in the past. As more information unfolds, we will continue to keep you updated.

Thank you for your continuing support of Gladwin County 4-H youth programs.

Sincerely,

Michelle Stiglich,

4-H Program Coordinator Serving Clare/Gladwin counties

JOIN | THE REVOLUTION
OF RESPONSIBILITY

Contact Us

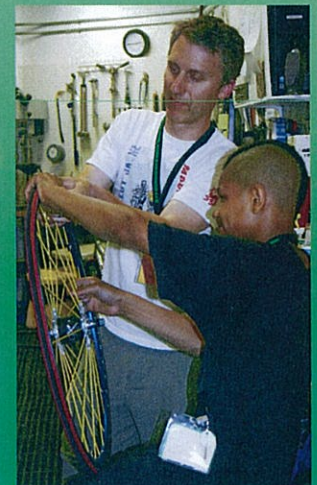
Michelle Stiglich
4-H Program Coordinator

Gladwin County
555 W Cedar Ave,
Suite A
Gladwin, MI
48624

Phone
989-426-7741

Email
@msue.gladwin@county.msu.edu

Web Site
msue.anr.msu.edu/county/info/gladwin





Attention...

Statewide 4-H Workshops

Each year, primarily during the school year, Michigan 4-H puts on workshops for teen and adult volunteer leaders. These workshops cover a variety of subject areas.

While, some up-coming workshops are listed on the right-hand side of this page, the entire schedule is on the Michigan 4-H web site at <http://bit.ly/1oIFRn2>

As individual workshops open for registration, details and the program announcement will be listed with the specific workshop.



4-H Workshops

2015

January 17-18: 4-H Youth Leadership & Global Citizenship Spectacular
<http://bit.ly/1xz6eX2>
Kettunen Center, Tustin

January 31-February 1: 4-H Winterfest
http://4h.msue.msu.edu/events/event/4_h_winterfest15
Kettunen Center, Tustin

February 14-16: Outdoor Adventure Challenge Winter Camping Workshop
http://4h.msue.msu.edu/programs/environmental_outdoor_education/outdoor_adventure
Pigeon River State Forest near Gaylord

February 27-28: 4-H Veterinary Science Teen & Adult Leaders Workshop
<http://bit.ly/1sujltU>
Kettunen Center, Tustin

February 28-March 1: 4-H Beef Sheep & Swine Teen & Adult Leaders Workshop
<http://bit.ly/1vRGKEf>
Kettunen Center, Tustin

Other 4-H Events

January 18: 4-H Day at the Breslin
http://msue.anr.msu.edu/events/4_h_day_at_the_breslin_lady_spartans_vs._iowa
Breslin Center, MSU, East Lansing

January 30-31: Green & White Hog Show
Contact Carla McLachlan (mclach12@msu.edu)
MSU Pavilion, East Lansing

January 31: State 4-H Rabbit & Cavy Show
http://msue.anr.msu.edu/events/4_h_rabbit_and_cavy_show
MSU Pavilion, East Lansing

February 6-7: 4-H Horse Judging Workshop & Mini Contest
Contact Taylor Fabus (tenlenta@msu.edu)
MSU Pavilion, East Lansing

February 7: 4-H/MQHA Benefit Clinic and Tack Sale
Contact Taylor Fabus (tenlenta@msu.edu)
MSU Pavilion, East Lansing

March 7: Spring Galaxy Meeting: 4-H Horse Program Committee
Contact Taylor Fabus (tenlenta@msu.edu)
Anthony Hall, MSU, East Lansing

March 22-25: 4-H Capitol Experience
http://4h.msue.msu.edu/events/4_h_capitol_experience
Lansing

For the most up-to-date events listing, go to <http://4h.msue.msu.edu/events>

Gladwin County 4-H Leaders

Keep in mind, to be considered an official leader the following process needs to take place:

- 1) VSP(Volunteer Selection Process) completion and a file in MSUE Office,
- 2) Listed on the 4-H Club Form as a Leader.
- 3.) Signed code of conduct/media/medical release
- 4.) Entered in the 4-H data system.

A General Leader– directly with young people on an ongoing basis.; **Organizational Administrative Leader**- are responsible for the club's overall management.

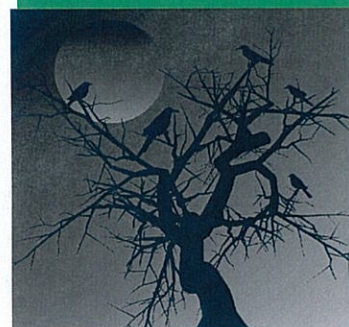
Project Leader- works with small groups of youth in a specific project area. Usually, a project leader is a parent who is interested in learning more, or is knowledgeable, about a given project area.

Resource Leader-These individuals are willing to share their interests and expertise with young people. Typically resource volunteers work with multiple clubs or help with countywide workshops or events held throughout the year.

All forms must be turned in to the MSUE Office, copied and the original is kept at the MSUE Office. Any volunteer that is left more than 15 minutes alone with youth will need to go through the VSP process. As our organization continues to change, and we need to continue to work together towards our mission to develop youth in a positive and educational setting.

A Quick Shout
out to the 4-H
Performing
Arts Club,
Especially 4-H
Leaders Jon
& Tracy Curtis.

Over 1000
people went
through the
Haunted Barn
this Year!



4-H County Events and Meetings

November

4-H Small Animal Assoc. Meeting.....11-6-14

4-H Annual Livestock Meeting.....11-11-14

4-H Horse Project Meeting.....11-13-14

MSU Ext. Office Closed (Thanksgiving).....11-27&28-14

December

MSU Ext. Office Closed (Christmas)12-24&25-14

MSU Ext. Office Closed (News Years Eve)12-31-14

Save the Date

MSU Lady Spartan Basketball1-18-2015

Winterfest.....1-31 —2-1, 2015

**4-H
Association
Meetings
are held at
the MSU
Extension
Office at
7:00pm**



**Season's
Blessings to
all the 4-H
Members
and their
Families.
Have a safe
and Happy
Holiday**

